

Certificate Issued To:

Dietary Supplement Company
1234 Main Street
Los Angeles, CA 90000



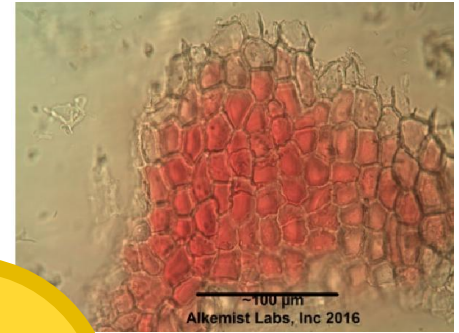
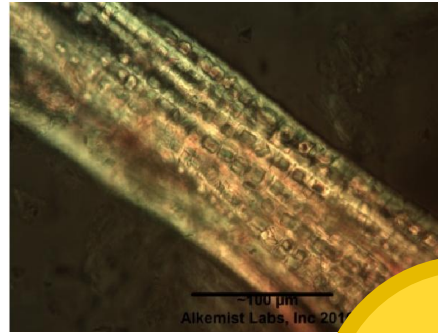
Work performed at:
Alkemist Labs
1260 Logan Ave B2
Costa Mesa, CA 92626
714-754-HERB (4372)
714-668-9972 (FAX)
sales@alkemist.com
www.alkemist.com

Certificate of Analysis: Buckthorn Bark (ABCDEFG)
Macroscopy & Microscopy with Digital Photo-Documentation

1

2

3



Company Name:	Dietary Supplement Company
Title:	Buckthorn Bark
Plant Part:	bark
Sample Received:	01/01/2016
Sample Description:	Clear Whirl-Pak
Form of Botanical:	crude plant powder
Appearance:	(1) fine brown powder
Lot:	ABCDEFG
Sample:	12345
Latin Name:	Rhamnus frangula L. (Frangula alnus Miller)
Reference Sample:	JL24515CRB Rhamnus frangula L. (Frangula alnus Miller) authenticated by macroscopic, microscopic &/or TLC studies according to the reference sources cited below; held at Alkemist Labs, Costa Mesa, CA.
Analyst:	E. Sudberg & N. Popejoy
Magnification:	(2) 400X
Chemical Reagents:	(2) acidified chloral hydrate glycerol solution
Sample Findings:	(2) phloem fibers, partially lignified, in groups with crystal sheaths
Magnification:	(3) 400X
Chemical Reagents:	(3) acidified chloral hydrate glycerol solution
Sample Findings:	(3) reddish-brown fragments of cork
Reference Source:	British Pharmacopoeia, 2015 MIC-SOP-54-04, MIC-SOP-54-05, MIC-SOP-54-06, MIC-SOP-510-07

Comments & Conclusions: This sample is representative of Rhamnus frangula L. (Frangula alnus Miller) bark based on an authenticated reference sample and the consistent characteristic cellular structure of bark as well as the references cited above. The characteristic cellular structures identified in this sample are the phloem fibers, partially lignified, in groups with crystal sheaths seen in micrograph (2) above. In micrograph (3) we see the reddish-brown fragments of cork. **This test sample, Buckthorn Bark (ABCDEFG), is consistent with the microscopic characteristics of the reference samples of Rhamnus frangula L. (Frangula alnus Miller) used above & is characteristic of Rhamnus frangula L. (Frangula alnus Miller) bark.**

NOTE: The presence of soluble excipients and other plant species material was not detected in this test sample.

Analyzed by: Nicholas Popejoy
Examined, Reviewed & Authorized by: Élan M Sudberg, CEO & Microscopist, Alkemist Labs

Report Date: 01/10/2016



This report applies to the sample investigated and is not necessarily indicative of the quality or condition of apparently identical or similar products. This report is for the exclusive use of the party who requested the report and not for public dissemination or use by third parties, including for promotional purposes, without the prior written permission of Alkemist Labs, Inc. This report provides technical results for a specific sample and the report shall not be altered, modified, supplemented or abstracted in any manner. Any violation of these conditions renders the report and its results void. © 2016 Alkemist Labs, Inc. All Rights Reserved